



GMT MONTHLY MEMBERSHIP PROGRESS REPORT

Results as of: 5/31/2018

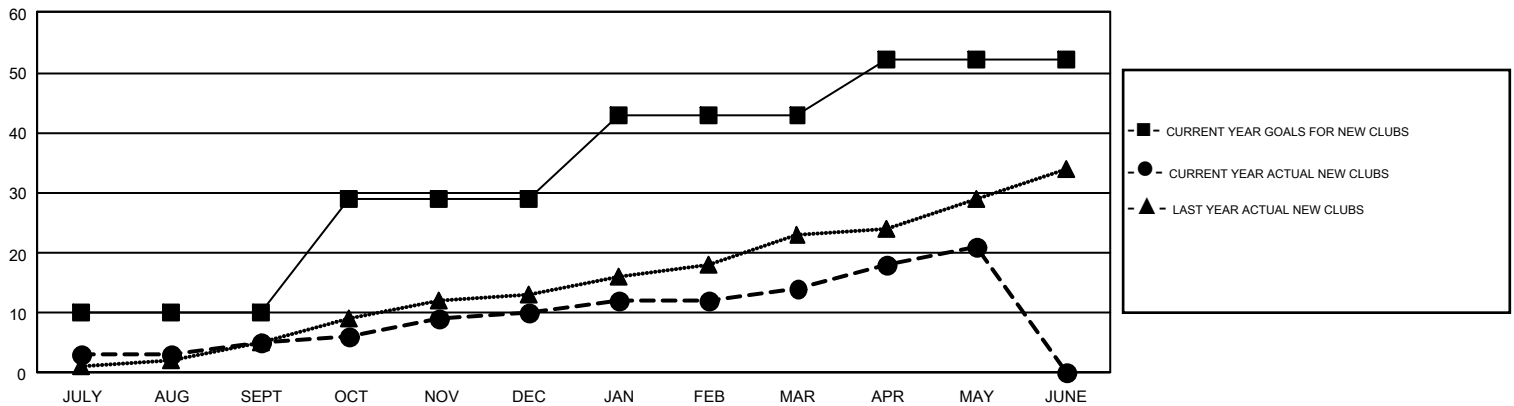
GMT Constitutional Area 1, Group F

GMT: JOE AL PICONE

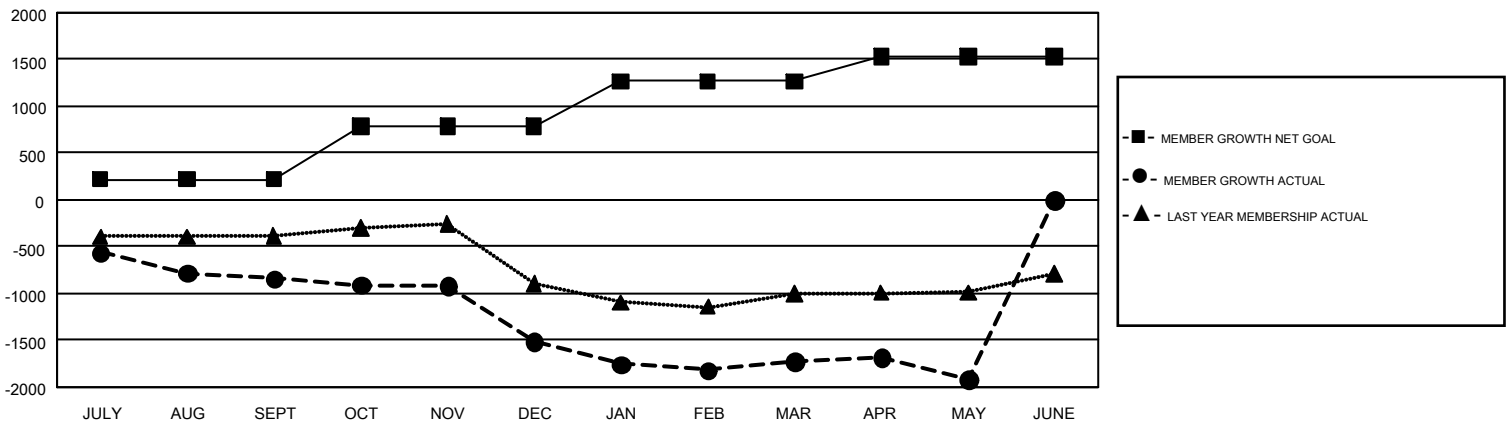
REPORT DOES NOT INCLUDE CLUBS IN UNDISTRICTED AREAS.

Clubs				Members			
RESULTS FOR 2017-2018				RESULTS FOR 2017-2018			
QUARTER	NEW CLUB GOAL	NEW CLUBS	DROPPED CLUBS	QUARTER	MEMBER GROWTH NET GOAL	MEMBER GROWTH ACTUAL	DROPPED MEMBERS ACTUAL (including transfers)
JULY/AUG/SEPT	10	5	16	JULY/AUG/SEPT	220	1,395	2,054
OCT/NOV/DEC	19	5	25	OCT/NOV/DEC	568	1,278	1,866
JAN/FEB/MAR	14	4	9	JAN/FEB/MAR	480	1,545	1,620
APR/MAY/JUNE	9	7	2	APR/MAY/JUNE	265	1,062	1,170

GOALS AND ACTUAL NEW CLUBS CUMULATIVE



GOALS AND ACTUAL MEMBERS CUMULATIVE



DROPPED CLUBS: 52	1,014 CLUBS OF 1,660 ADDED 1 OR MORE NEW MEMBERS	<u>GENDER DISTRIBUTION</u>
<u>DROPPED MEMBERS</u>	CLICK HERE FOR CUMULATIVE MEMBERSHIP DATA	MALE 30,140 (67.51%)
DECEASED 543		FEMALE 14,504 (32.49%)
CLUB CANCELLED 309		TOTAL FAMILY UNIT MEMBERS 6,946
OTHER 5,853		FAMILY MEMBERS PAYING HALF DUES 3,558
TOTAL 6,705		